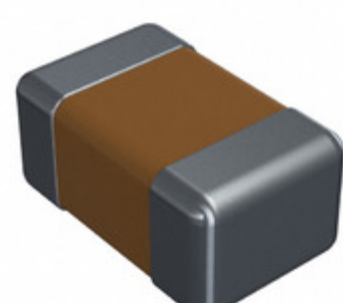


**08053A331KAT2A**



**Part Number:** 08053A331KAT2A  
**Manufacturer:** AVX Corporation  
**Description:** CAP CER 330PF 25V NP0 0805  
**Data sheet:** [PDF Ceramic Chip Capacitor Catalog](#)  
[PDF C0G\(NP0\) Dielectric](#)  
[PDF Part Number Explanation](#)

**RoHS Status:** Lead free / RoHS Compliant  
**Ship From:** Hong Kong  
**Shipment Way:** DHL/Fedex/TNT/UPS/EMS

Images are for reference only.  
 See Product Specifications for product details.  
 Buy 08053A331KAT2A with confidence from  
 Component-World.HK, 1 Year Warranty

[Request For Quotation](#)

**PRODUCT PARAMETER**

<b>Part Number</b>	08053A331KAT2A	<b>Manufacturer</b>	<a href="#">AVX Corporation</a>
<b>Description</b>	CAP CER 330PF 25V NP0 0805	<b>Lead Free Status / RoHS Status</b>	Lead free / RoHS Compliant
<b>Quantity Available</b>	1165734 pcs	<b>Data sheet</b>	<a href="#">Ceramic Chip Capacitor Catalog</a> <a href="#">C0G(NP0) Dielectric</a> <a href="#">Part Number Explanation</a>
<b>Category</b>	<a href="#">Capacitors</a>	<b>Voltage - Rated</b>	25V
<b>Tolerance</b>	±10%	<b>Thickness (Max)</b>	0.037" (0.94mm)
<b>Temperature Coefficient</b>	C0G, NP0	<b>Size / Dimension</b>	0.079" L x 0.049" W (2.01mm x 1.25mm)
<b>Series</b>	-	<b>Ratings</b>	-
<b>Packaging</b>	Tape & Reel (TR)	<b>Package / Case</b>	0805 (2012 Metric)
<b>Operating Temperature</b>	-55°C ~ 125°C	<b>Mounting Type</b>	Surface Mount, MLCC
<b>Moisture Sensitivity Level (MSL)</b>	1 (Unlimited)	<b>Manufacturer Standard Lead Time</b>	28 Weeks
<b>Lead Style</b>	-	<b>Lead Spacing</b>	-
<b>Lead Free Status / RoHS Status</b>	Lead free / RoHS Compliant	<b>Height - Seated (Max)</b>	-
<b>Features</b>	-	<b>Failure Rate</b>	-
<b>Detailed Description</b>	330pF ±10% 25V Ceramic Capacitor C0G, NP0 0805 (2012 Metric)	<b>Capacitance</b>	330pF
<b>Applications</b>	General Purpose		

Component-World.com is a Reliable Stocking Distributor of Electronic Components. We specialize in all AVX Corporation series electronic components. We have 1165734 pieces of AVX Corporation 08053A331KAT2A in stock available now. Request a quote from electronics components distributor at Component-World.com, our sales team will contact you within 24 hours.

RFQ Email: [info@Components-World.com](mailto:info@Components-World.com)

**RELATED PRODUCTS**

	<b>Part#:</b> <a href="#">08053A330FAT2A</a> <b>Description:</b> CAP CER 33PF 25V NP0 0805	<b>Manufacturers:</b> <a href="#">AVX Corporation</a>	<a href="#">RFQ</a>
	<b>Part#:</b> <a href="#">08053A332GAT2A</a> <b>Description:</b> CAP CER 3300PF 25V C0G/NP0 0805	<b>Manufacturers:</b> <a href="#">AVX Corporation</a>	<a href="#">RFQ</a>
	<b>Part#:</b> <a href="#">08053A330JAT2A</a> <b>Description:</b> CAP CER 33PF 25V NP0 0805	<b>Manufacturers:</b> <a href="#">AVX Corporation</a>	<a href="#">RFQ</a>
	<b>Part#:</b> <a href="#">08053A331JAT2A</a> <b>Description:</b> CAP CER 330PF 25V NP0 0805	<b>Manufacturers:</b> <a href="#">AVX Corporation</a>	<a href="#">RFQ</a>
	<b>Part#:</b> <a href="#">08053A362FAT2A</a> <b>Description:</b> CAP CER 3600PF 25V NP0 0805	<b>Manufacturers:</b> <a href="#">AVX Corporation</a>	<a href="#">RFQ</a>
	<b>Part#:</b> <a href="#">08053A390JAT2A</a> <b>Description:</b> CAP CER 39PF 25V NP0 0805	<b>Manufacturers:</b> <a href="#">AVX Corporation</a>	<a href="#">RFQ</a>
	<b>Part#:</b> <a href="#">08053A2R0CAT2A</a> <b>Description:</b> CAP CER 2PF 25V NP0 0805	<b>Manufacturers:</b> <a href="#">AVX Corporation</a>	<a href="#">RFQ</a>
	<b>Part#:</b> <a href="#">08053A332KAT2A</a> <b>Description:</b> CAP CER 3300PF 25V NP0 0805	<b>Manufacturers:</b> <a href="#">AVX Corporation</a>	<a href="#">RFQ</a>
	<b>Part#:</b> <a href="#">08053A272KAT2A</a> <b>Description:</b> CAP CER 2700PF 25V NP0 0805	<b>Manufacturers:</b> <a href="#">AVX Corporation</a>	<a href="#">RFQ</a>
	<b>Part#:</b> <a href="#">08053A332GAT4A</a> <b>Description:</b> CAP CER 3300PF 25V C0G/NP0 0805	<b>Manufacturers:</b> <a href="#">AVX Corporation</a>	<a href="#">RFQ</a>
	<b>Part#:</b> <a href="#">08053A332FAT2A</a> <b>Description:</b> CAP CER 3300PF 25V C0G/NP0 0805	<b>Manufacturers:</b> <a href="#">AVX Corporation</a>	<a href="#">RFQ</a>
	<b>Part#:</b> <a href="#">08053A330KAT2A</a> <b>Description:</b> CAP CER 33PF 25V NP0 0805	<b>Manufacturers:</b> <a href="#">AVX Corporation</a>	<a href="#">RFQ</a>
	<b>Part#:</b> <a href="#">08053A390KAT2A</a> <b>Description:</b> CAP CER 39PF 25V NP0 0805	<b>Manufacturers:</b> <a href="#">AVX Corporation</a>	<a href="#">RFQ</a>
	<b>Part#:</b> <a href="#">08053A300JAT2A</a> <b>Description:</b> CAP CER 30PF 25V NP0 0805	<b>Manufacturers:</b> <a href="#">AVX Corporation</a>	<a href="#">RFQ</a>
	<b>Part#:</b> <a href="#">08053A2R7BAT2A</a> <b>Description:</b> CAP CER 2.7PF 25V NP0 0805	<b>Manufacturers:</b> <a href="#">AVX Corporation</a>	<a href="#">RFQ</a>
	<b>Part#:</b> <a href="#">08053A332FAT9A</a> <b>Description:</b> CAP CER 3300PF 25V C0G/NP0 0805	<b>Manufacturers:</b> <a href="#">AVX Corporation</a>	<a href="#">RFQ</a>
	<b>Part#:</b> <a href="#">08053A331FAT2A</a> <b>Description:</b> CAP CER 330PF 25V NP0 0805	<b>Manufacturers:</b> <a href="#">AVX Corporation</a>	<a href="#">RFQ</a>
	<b>Part#:</b> <a href="#">08053A332JAT2A</a> <b>Description:</b> CAP CER 3300PF 25V C0G/NP0 0805	<b>Manufacturers:</b> <a href="#">AVX Corporation</a>	<a href="#">RFQ</a>
	<b>Part#:</b> <a href="#">08053A391FAT2A</a> <b>Description:</b> CAP CER 390PF 25V NP0 0805	<b>Manufacturers:</b> <a href="#">AVX Corporation</a>	<a href="#">RFQ</a>
	<b>Part#:</b> <a href="#">08053A302JAT2A</a> <b>Description:</b> CAP CER 3000PF 25V NP0 0805	<b>Manufacturers:</b> <a href="#">AVX Corporation</a>	<a href="#">RFQ</a>

**Related keywords for 08053A331KAT2A**

<a href="#">AVX Corporation 08053A331KAT2A</a>	<a href="#">08053A331KAT2A distributor</a>	<a href="#">08053A331KAT2A supplier</a>	<a href="#">08053A331KAT2A price</a>
<a href="#">08053A331KAT2A download datasheet</a>	<a href="#">08053A331KAT2A datasheet</a>	<a href="#">08053A331KAT2A stock</a>	<a href="#">buy 08053A331KAT2A</a>
<a href="#">AVX Corporation 08053A331KAT2A</a>	<a href="#">AVX Corporation [MIL] 08053A331KAT2A</a>		